

# ECDL/CDL Observation Guide

## Times you may observe:

- Monday-Friday during days that CDL is open (<https://cdl.illinois.edu/> - Calendar is at the bottom of the page)
  - 9:30am-12:30pm
  - 3-4pm
- Do not enter the building before these times.
- Please ensure you have completed your tasks and have exited the buildings by these times (including picking up your I-Card and signing out)

## Classroom/Building/Booth Information:

\*Please note, that the CDL program is located in two separate buildings\*

- CDL Building – Serves our older children
  - Address – 1105 W. Nevada St. Urbana, IL 61801
  - 4 classrooms, 2 larger booths
    - Preschool 1, Preschool 2, and Preschool 3 – Children are between the ages of 3-5 years old
    - Twos 1 – Children are between 2-3 years old
- ECDL Building – Serves our younger children
  - Address – 1005 W. Nevada St., Urbana, IL 61801
  - 7 classrooms, 5 smaller booths
    - Infant 1, Infant 2, and Infant 3 – Children are 6 weeks to 12 months of age
    - Infant/Toddler – Children are older infants and our younger toddler children
    - Toddler 1– Children are 12 to 24 months
    - Toddler 2– Children are 12 to 24 months
    - Toddlers & Twos – A mix of our older toddlers and younger two-year old children
    - Twos 2 – Children are between 2-3 years old

## Exiting the Building:

- Please exit the building the same way you entered
- Remember to sign out at the ECDL building, AND complete which booth(s) you were observing in on the sign-in sheet
- Remember to pick up your I-Card

## Early Child Development Laboratory (ECDL)



ECDL is located at 1005 W Nevada Street, our front entrance is located off of Lincoln Ave, sharing a parking lot with the Jimmy Johns Franchise. Please do not enter through the door on the Nevada Street Entrance, this is a restricted area.



## Child Development Laboratory (CDL)



CDL is located at 1105 W Nevada Street, you must visit ECDL to sign in and obtain an access card prior to visiting CDL. You will not be able to observe without the access card.

## OBSERVATION DIRECTIONS:

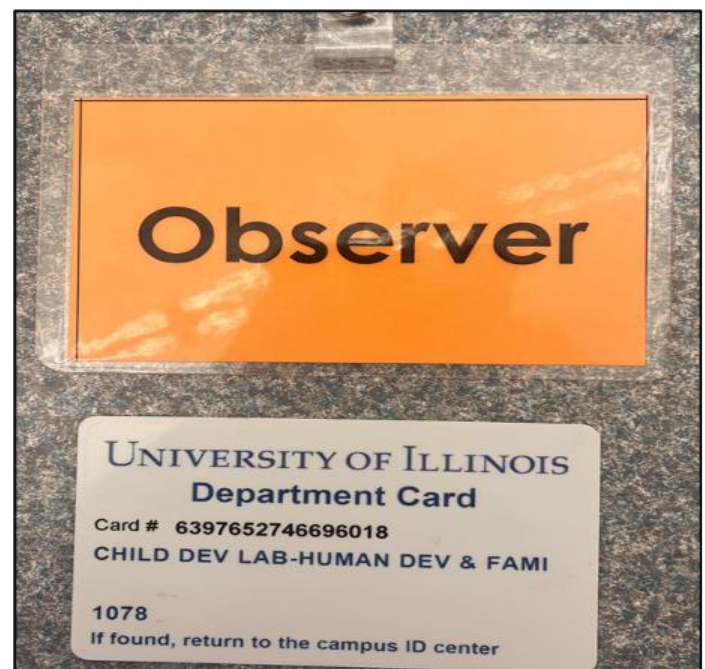
**Step 1:** enter through the Early Child Development Lab's (ECDL) front entrance.

**Step 2:** tell whoever is at the front desk that you are here to observe in the observation booths.



**Step 3:** hand over your I card (or something you will come back for, driver's license, state ID, keys, etc) in exchange for a observer name tag and an access card

**Step 4:** fill out a row in the binder located on the ledge near the hand sanitizer. This will include Name, Course Information, Student's Contact Information, Time of Entry, Time of Exit, and Booth you were in during these times.



## Early Child Development Lab Steps

For infant and toddler-aged children, then observe in the EDCL.

**Step 5:** Use the key card to walk to observation booths.

Hold the key card up to the black box to the right of the door. A green light will appear on the top of the box when the door is unlocked. You should also hear the door click.

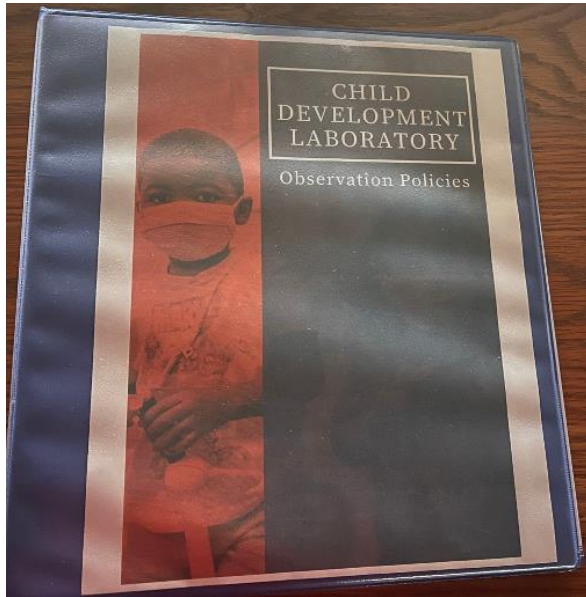


**Step 6:** Pick a Booth

The ECDL has 6 observation booths. You can view all classrooms from at least one of the booths. Each observation booth has a sign on the door indicating what observation booth it is.



## What's in the observation booths at the ECDL:



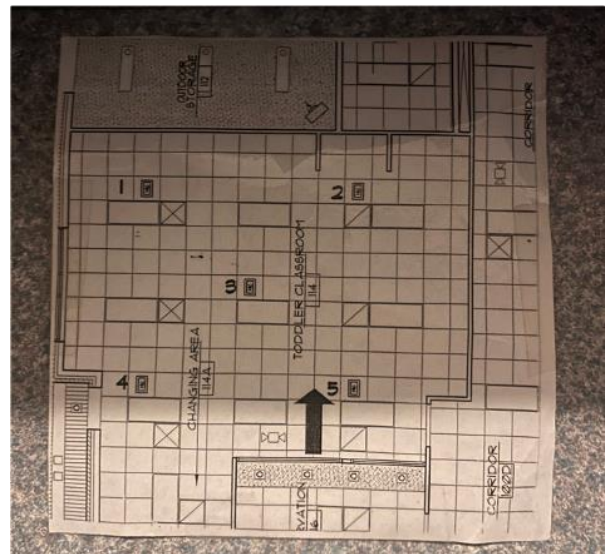
Refer to the binders in each booth for information on how to observe



Refer to the bulletin board on the back wall of the observation booth for more information on each classroom



Headphone Jack and dials to adjust which microphone you are listening to. The numbers on the map correspond to the different numbered dials.



Audio Map lets you know where you are listening to in the classroom. Each number on the map is a different microphone.

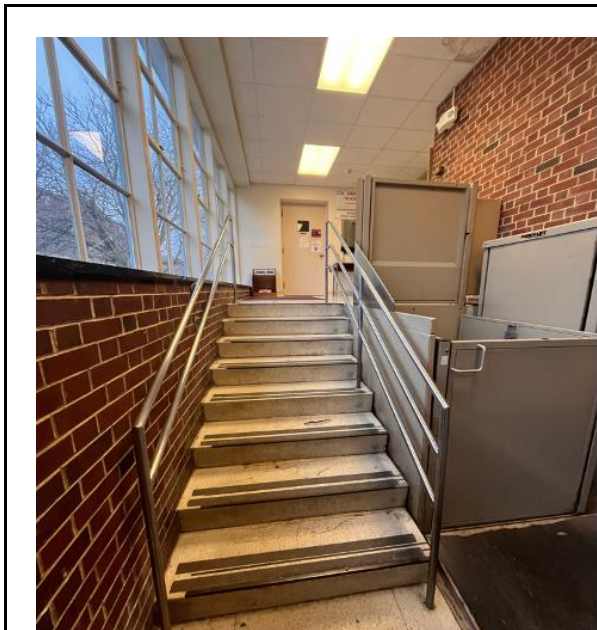
## Child Development Lab (CDL) Steps:

If you want to observe preschool-aged children, then walk over and observe in the CDL.

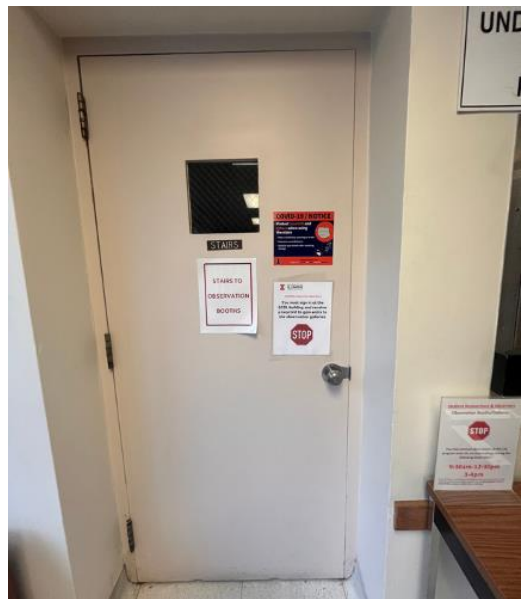
### Step 5: How to get to the CDL.

- exit through the main entrance of the ECDL.
- Walk to the entrance of the parking lot and turn left.
- Continue to walk straight until you reach the corner (by Café Paradiso), then turn left.
- Continue to walk straight past the ECDL's other entrance until you see a building with blue windows and a circle drive.

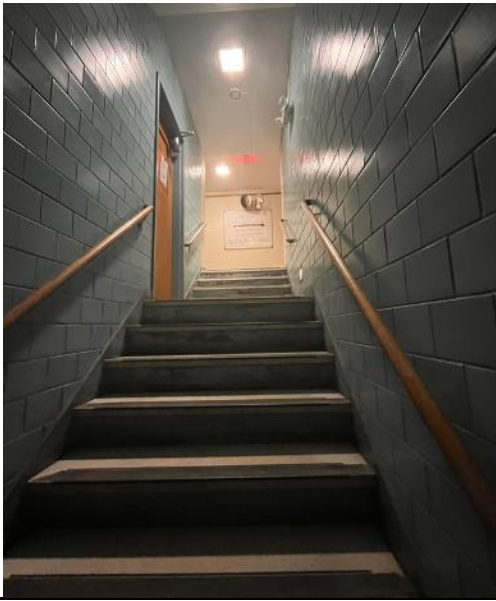
### Step 6: Enter the main door of the CDL.



Walk up the main steps



Walk to the first door you see at the top of the steps and enter



**Walk up the stairs**



**Follow the arrow on the whiteboard at the top of the stairs**

**Step 8: Pick a booth and enter.**

The CDL has two observation booths that each have a view of two different classrooms.



**The door labeled "East" observers Preschool 1 and 2**



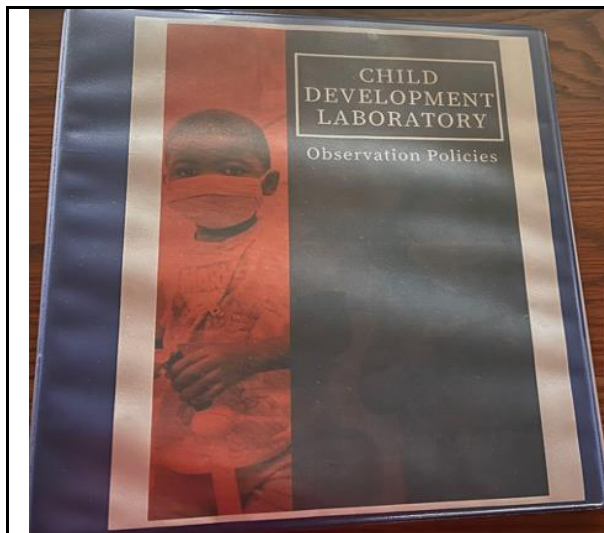
**The door labeled "West" observers Preschool 3 and Twos 1**



To enter either one of the booths, tap your key card on the black box until you see a green light, indicating the door is now unlocked.



What's in the observation booths at the CDL:



Use the binder for more information on how to observe



Refer to the classroom name, teacher photos, student photos, and sibling lists found on the mesh above the tabletops in the booths

